

SQ SERIES

SQB20I

2 POLE, DIN RAIL



TYPE

SQB20I
Socket for 2-pole RQ relay

SPECIFICATIONS

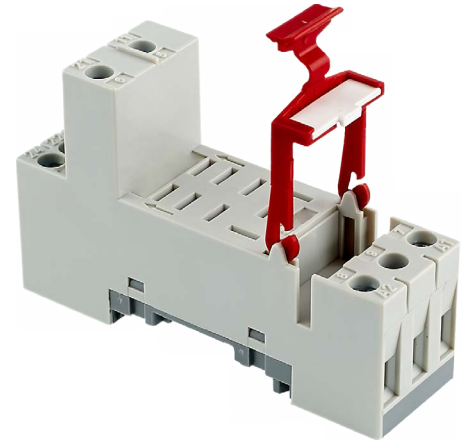
Rated load	10 A / 250 V
Insulation	Test voltage V rms 1 min
- Coil / Contacts	2,5 kV
- All terminals DIN rail	2,5 kV
Cross-section of connecting wire	
- Single-wire	4 mm ² or 2 x 2,5 mm ²
- Multi-wire	22 - 14 AWG
Max. screw torque	1,2 Nm
Mounting	DIN rail TS35 or mounting panel
Ambient temperature	- 40 ... + 80 °C
Weight	38g

SOCKET FOR PLUG-IN RELAYS

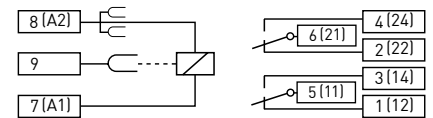
RQ2010, RQ2117, RQ2014, RQ1015, RQ1018

ACCESSORIES

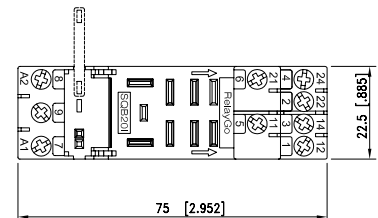
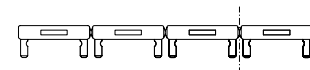
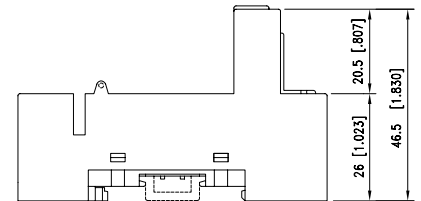
Coil bridge bus bar available	BQ14 (A2)
Integrated retaining plastic clip	
Labelling space	



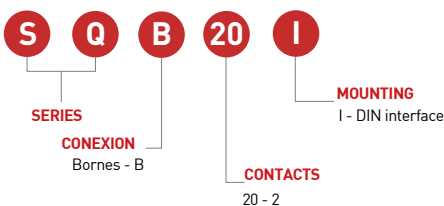
CONNECTION DIAGRAM



DIMENSIONS mm [inch]



ORDERING CODE



TECHNICAL APPROVALS



IEC 61810; EN 60947