

SQ SERIES

SQB20D

2 POLE, DIN RAIL



TYPE

SQB20D
Socket for 2-pole RQ relay

SPECIFICATIONS

Rated load	10 A / 250 V
Insulation	Test voltage V rms 1 min
- Coil / Contacts	2,5 kV
- All terminals DIN rail	2,5 kV
Cross-section of connecting wire	
- Single-wire	4 mm ² or 2 x 2,5 mm ²
- Multi-wire	22 - 14 AWG
Max. screw torque	1,2 Nm
Mounting	DIN rail TS35 or mounting panel
Ambient temperature	- 40 ... + 80 °C
Weight	32g

SOCKET FOR PLUG-IN RELAYS

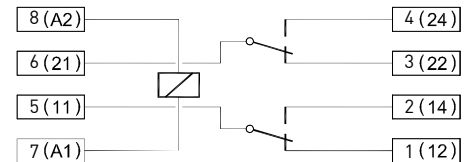
RQ2010, RQ1015, RQ2117, RQ2014, RQ1018, RQ2021

ACCESSORIES

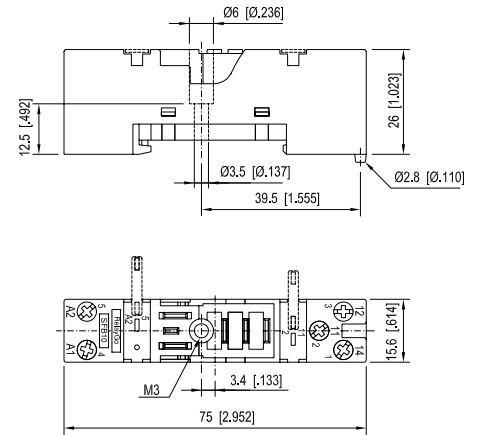
Integrated retaining plastic clip	AC70A
Labelling space	



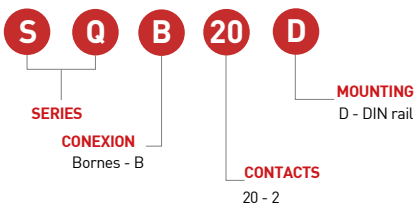
CONNECTION DIAGRAM



DIMENSIONS mm [inch]



ORDERING CODE



TECHNICAL APPROVALS



In process In process In process
IEC 61810; EN 60947