

SF SERIES

SFB20D

2 POLE, DIN RAIL

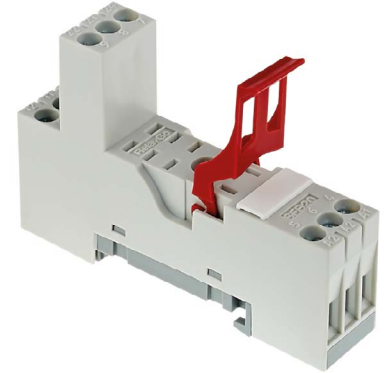


TYPE

SFB20D
Socket for RF relays

SPECIFICATIONS

Rated load	5 A / 250 V
Insulation	Test voltage V rms 1 min
- Coil / Contacts	5 kV
- All terminals DIN rail	5 kV
Cross-section of connecting wire	
- Single-wire	4 mm ² or 2 x 2,5 mm ²
- Multi-wire	22 - 14 AWG
Max. screw torque	1.2 Nm
Mounting	DIN rail TS35 or mounting panel
Ambient temperature	- 40 ... + 80 °C
Weight	24 g

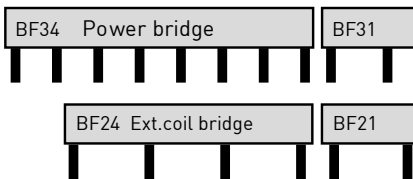


SOCKET FOR PLUG-IN RELAYS

RF2110, RF2114

ACCESSORIES

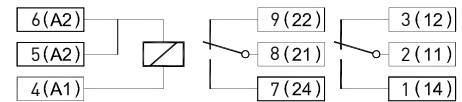
Coil/ Contact bridge bar available	BF24 (A2), BF21 (A2) / BF34, BF31
Integrated retaining plastic clip	AC00A
Labelling space	



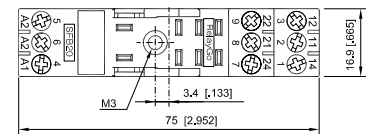
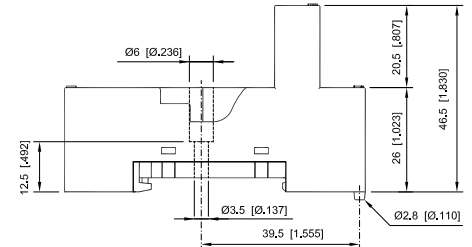
Example:
A11 can be connected to bridge BF34 and BF31

Example:
A2 can be connected to bridge BF24 and BF21

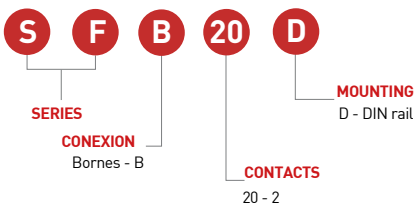
CONNECTION DIAGRAM



DIMENSIONS mm [inch]



ORDERING CODE



TECHNICAL APPROVALS



IEC 61810; EN 60947