

SF SERIES

SFB10D

1 POLE, DIN RAIL

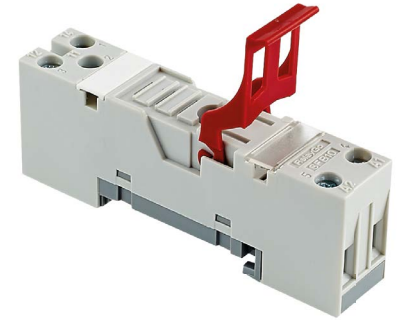


TYPE

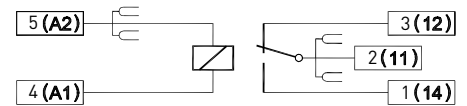
SFB10D
Socket for 1-pole RF and RS relays

SPECIFICATIONS

Rated load	10 A / 250 V
Insulation	Test voltage V rms 1 min
- Coil / Contacts	5 kV
- All terminals DIN rail	5 kV
Cross-section of connecting wire	
- Single-wire	4 mm ² or 2 x 2,5 mm ²
- Multi-wire	22 - 14 AWG
Max. screw torque	1.2 Nm
Mounting	DIN rail TS35 or mounting panel
Ambient temperature	- 40 ... + 80 °C
Weight	28 g



CONNECTION DIAGRAM



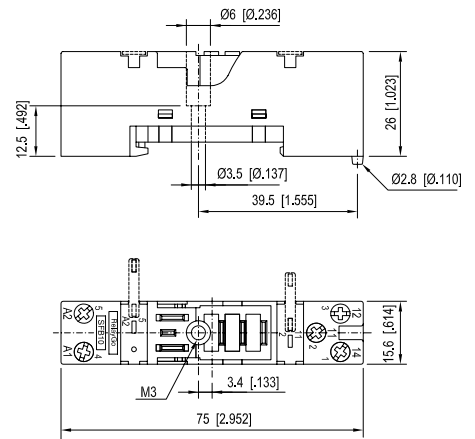
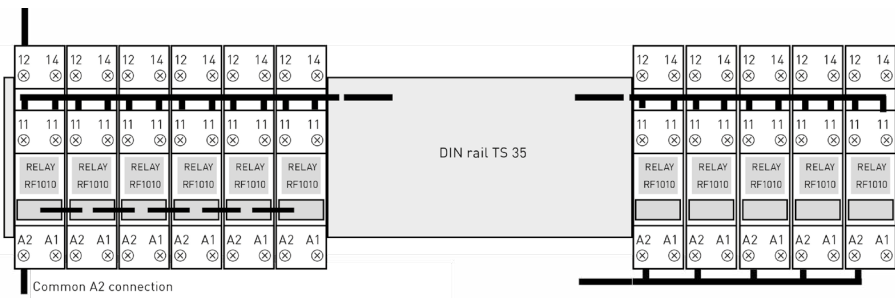
SOCKET FOR PLUG-IN RELAYS

RF1010, RF1014, RF1410, RF1217, RF1222,
RS1614, RS1714, RS1814, RS1914

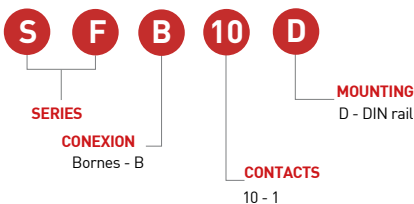
ACCESSORIES

Coil/ Contact bridge bar available	BF14 (A2, 11)
Integrated retaining plastic clip	
Labelling space	

DIN RAIL TS 35



ORDERING CODE



TECHNICAL APPROVALS



In process In process In process
IEC 61810; EN 60947