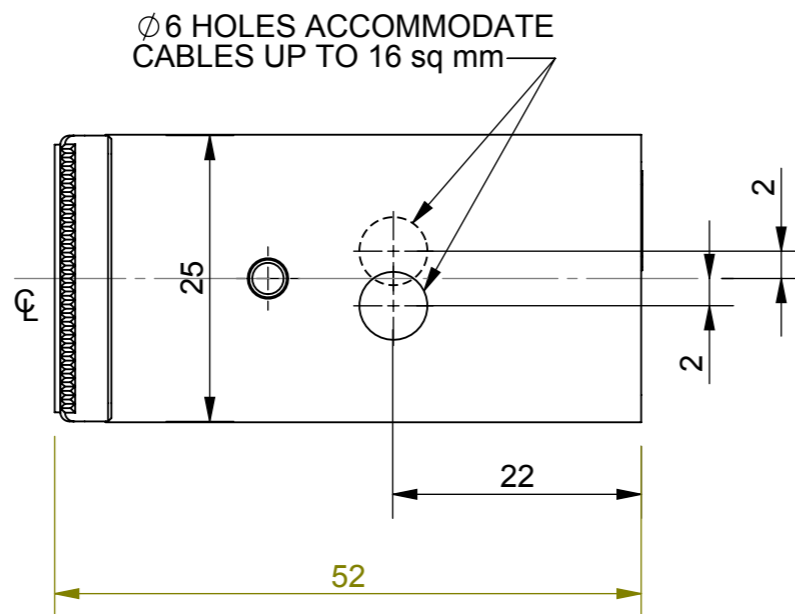
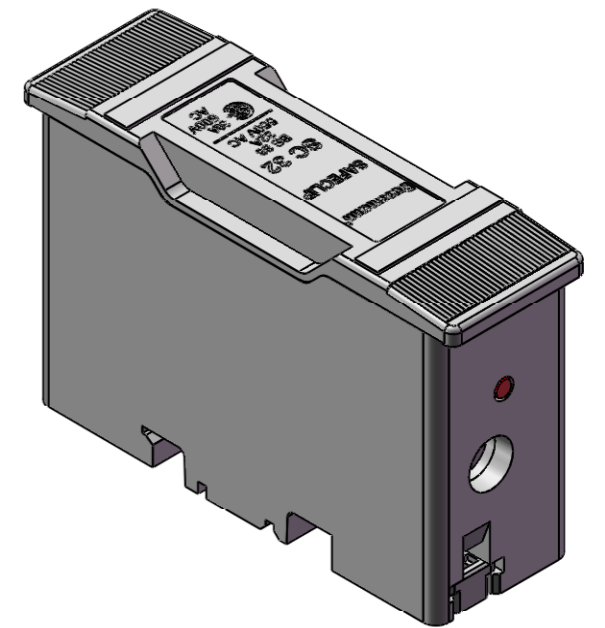
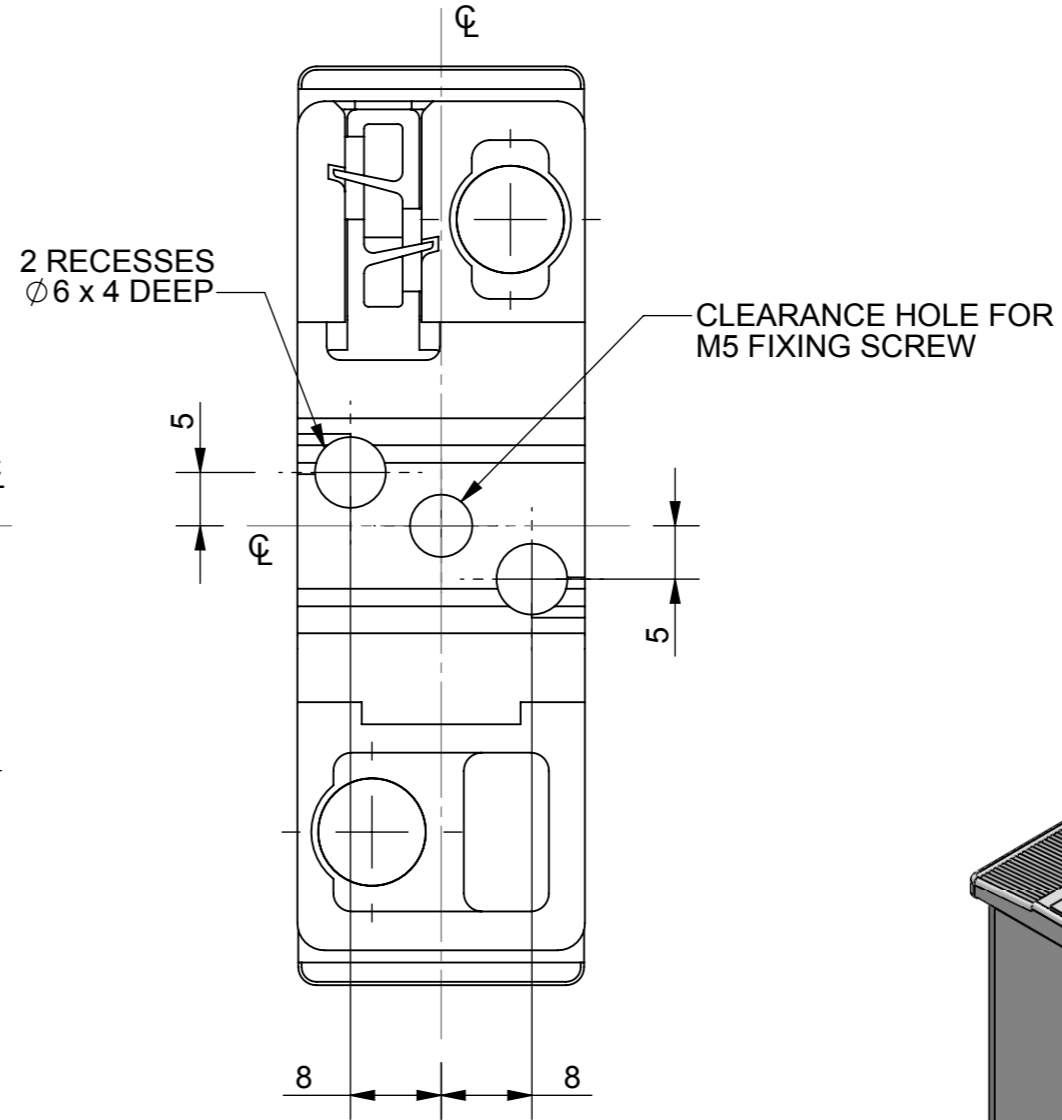
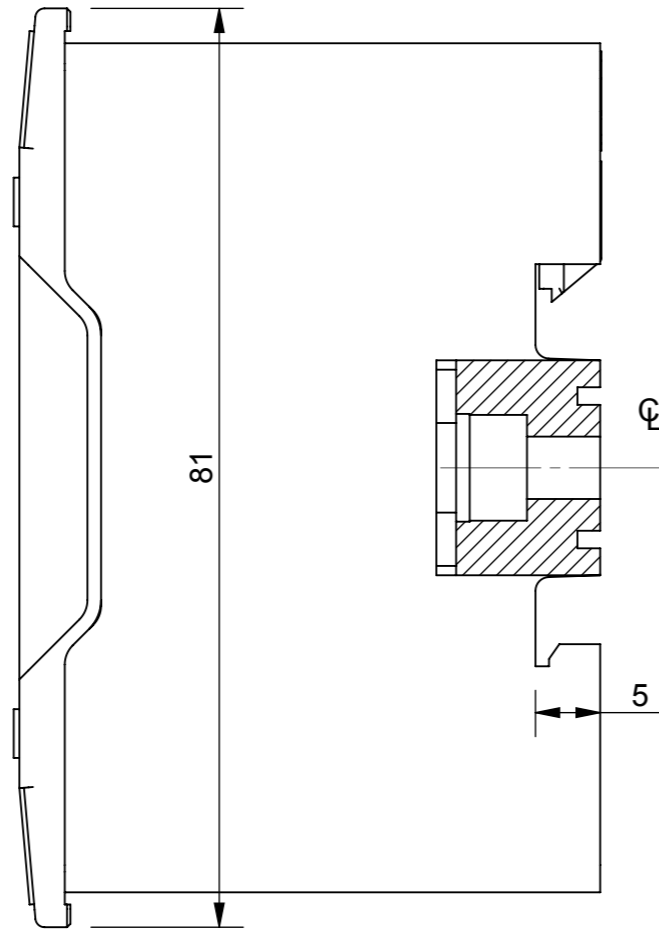
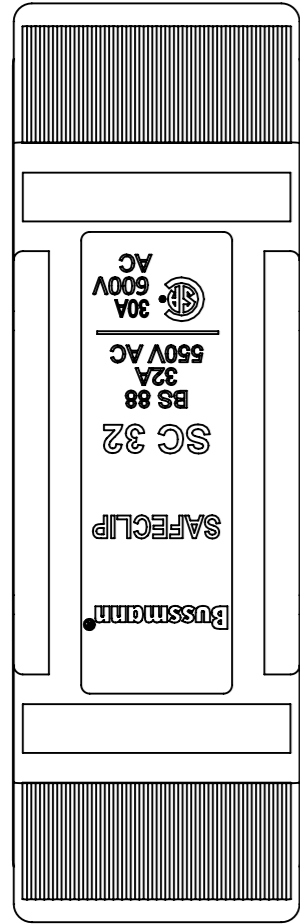


ITEM No . SC32H-D---

REVISION

REV	DESCRIPTION	BY	DATE	CHANGE NO.
A	CONVERSION OF GE RED SPOT DRAWINGS TO SOLIDWORKS	RAG	22/05/2012	B17157

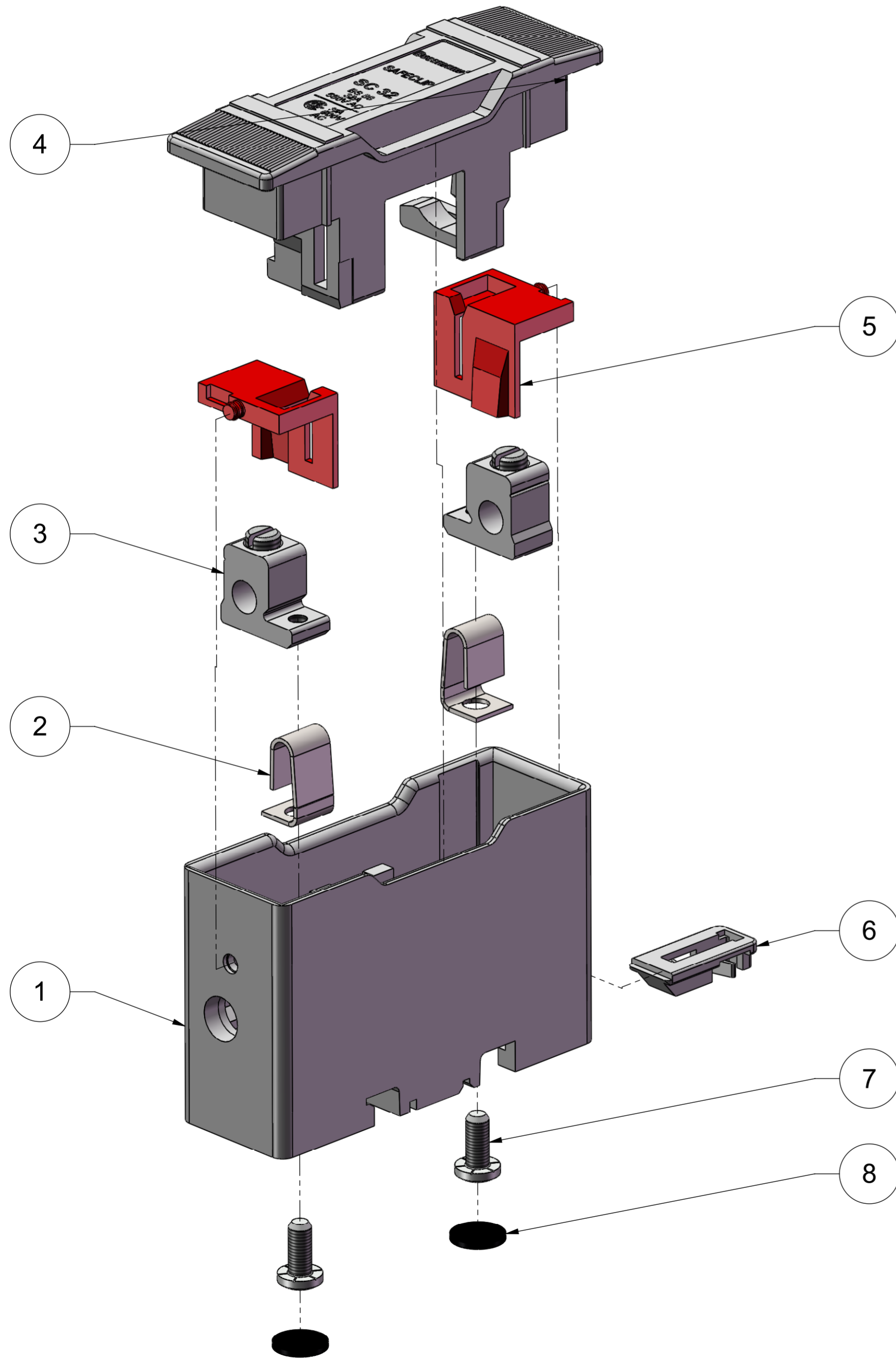


PANEL DRILLING VIEWED FROM FRONT

MODEL VERSION: 00 MODEL SOURCE FILE: 1000001920	MATERIAL:	VARIOUS	<small>UNLESS OTHERWISE SPECIFIED, ALL DIMENSIONS ARE IN MILLIMETERS.</small> TOLERANCES UNLESS OTHERWISE SPECIFIED: GENERAL ± 0.4mm ANGULAR ± 1°						COOPER Bussmann (UK) Ltd Burton-on-the-Wolds, Leics, LE12 5TH Tel +44 1509 882 600 Fax +44 1509 882786		
	FINISH:	NONE	UNCONTROLLED COPY	THIS DRAWING IS CONFIDENTIAL AND THE COPYRIGHT OF COOPER BUSSMANN AND MUST NOT BE COPIED OR PASSED ON TO A THIRD PARTY WITHOUT WRITTEN CONSENT				TITLE: SAFECLIP 32A FRONT CONNECTED SC32H-D SERIES			
	SURFACE AREA:	VARIOUSmm ²	DWG NO: 1000001920 ANGLE: THIRD REV: A	DRAWN BY: RAG CHECKED BY: JM/NS DATE: 22/05/2012 SCALE: NTS		SIZE: A3 SHEET: 1 OF 2					
	VOLUME:	52117.26mm ³									
MASS:	359.39g										

ITEM No . SC32H-D---

REVISION				
REV	DESCRIPTION	BY	DATE	CHANGE NO.
A	CONVERSION OF GE RED SPOT DRAWINGS TO SOLIDWORKS	RAG	22/05/2012	B17157



ITEM NO.	PART NUMBER	SC32H-D	SC32H-DWH	SC32H-DGN	DESCRIPTION
		QTY.			
1	0K50003-1	1	--	--	SC32 MOULDED BASE - BLACK
	0K50003-2	--	1	--	SC32 MOULDED BASE - WHITE
	0K50003-3	--	--	1	SC32 MOULDED BASE - GREEN
2	H22D2007	2	2	2	SPRING STIRRUP
3	H28D2010	2	2	2	BASE CONTACT BLOCK ASSEMBLY
4	1K50021-1	1	--	--	SC32 FUSE CARRIER BLACK
	1K50021-2	--	1	--	SC32 FUSE CARRIER WHITE
	1K50021-3	--	--	1	SC32 FUSE CARRIER GREEN
5	H26C2034	2	2	2	SHROUD 20AMP FUSE FITTING
6	2K50005-1	1	1	1	SPRING
7	H20D2007	2	2	2	SPECIAL SCREW WITH SERRATED M4 POSIDRIV PAN HEAD
8	C4160-41	2	2	2	BASE DISC

MODEL NUMBER: 1000001920 MODEL NUMBER: 1000001920	MATERIAL: VARIOUS	<small>UNLESS OTHERWISE SPECIFIED: ALL DIMENSIONS ARE IN MILLIMETERS.</small> <small>TOLERANCES UNLESS OTHERWISE SPECIFIED:</small> GENERAL ± 0.4mm ANGULAR ± 1°	COOPER Bussmann (UK) Ltd Burton-on-the-Wolds, Leics, LE12 5TH Tel +44 1509 882 600 Fax +44 1509 882786	
	FINISH: NONE	UNCONTROLLED COPY	TITLE: SAFECLIP 32A FRONT CONNECTED SC32H-D SERIES	
	SURFACE AREA: VARIOUSmm ² VOLUME: 52117.26mm ³ MASS: 359.39g	THIS DRAWING IS CONFIDENTIAL AND THE COPYRIGHT OF COOPER BUSSMANN AND MUST NOT BE COPIED OR PASSED ON TO A THIRD PARTY WITHOUT WRITTEN CONSENT	DWG NO: 1000001920 SCALE: NTS DATE: 22/05/2012	ANGLE: THIRD REV: A
			DRAWN BY: RAG CHECKED BY: JM/NS	SIZE: A2 SHEET: 2 OF 2